



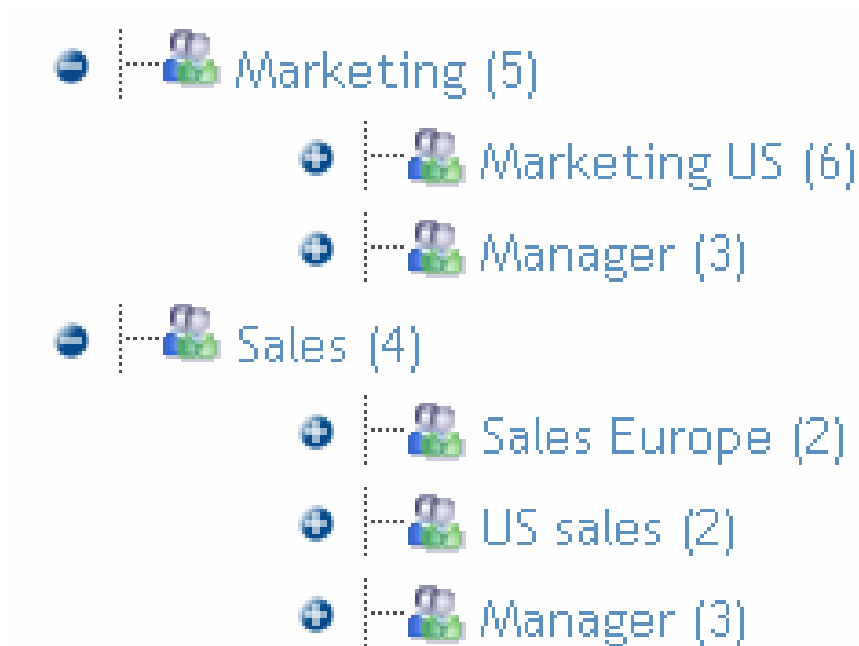
Xi security administration becomes so easy

Thank you to the Wisconsin BusinessObjects User Group Committee for giving us this opportunity to share our knowledge and success stories.



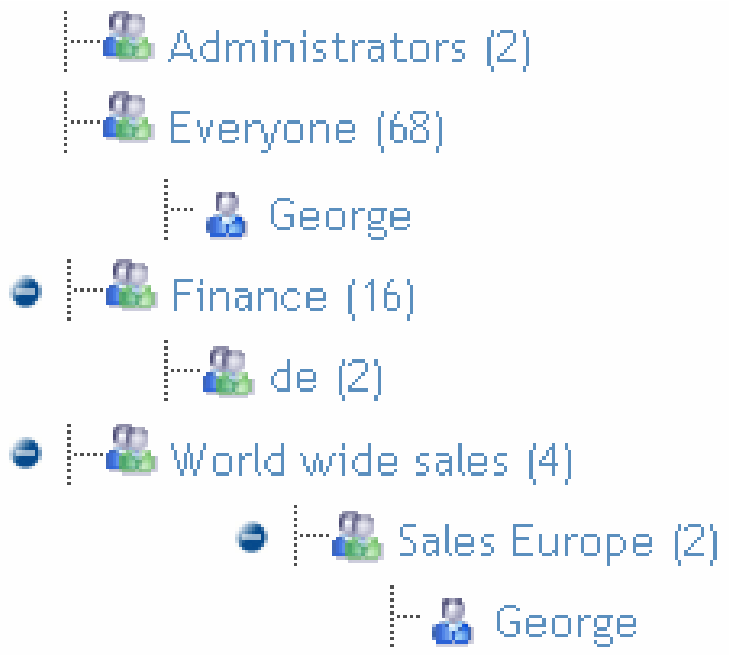
- 1 BOE Xir2 security concepts
- 2 Tips and tricks
- 3 BOE Xi 3.0 security: What's new?
- 4 Xi standard administration
- 5 360view: Xi security administration becomes so easy

- Group structure is no longer a classic tree like under legacy BO. A group can belong to more than one group. A kind of **acyclic graph**:



- Create two group trees: functional groups and technical groups.

- A user can belong to more than one group (the Everyone group, a technical group and a functional one).



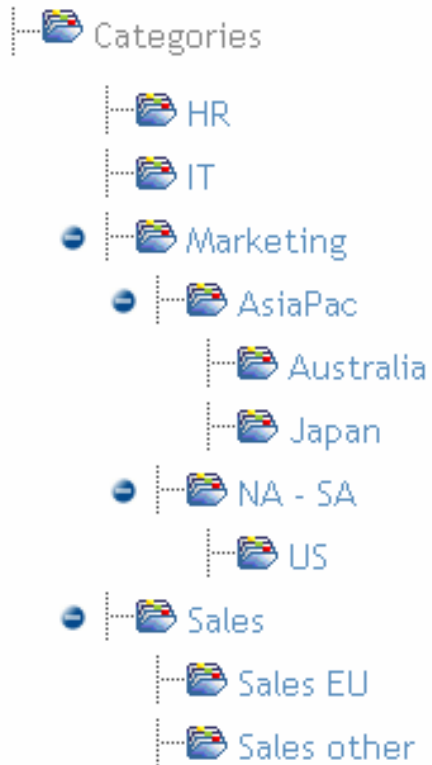
- Under BOE Xir2, universes and documents are stored within **folders**.
- Objects can be stored in one folder only. There are four folder trees.



← Unlimited folder tree (documents & universes)

- **Universe overloads** are now managed under **Designer**.

- Documents can belong to multiple categories. **Don't manage security on categories.**
- Unlimited category tree for documents. There are two category trees.



← Category tree (documents)

Explicit right

Inherited right

	Administrators	Everyone	Worldwide sales	Sales Europe	US sales	
Root Folder	A	NA	(NA)	(NA)	(NA)	
Sales (...)	(A)	(NA)	(VOD)	(VOD)	(VOD)	
Sales Europe (...)	(A)	(NA)	(VOD)	(VOD)	(VOD)	
Sales France (...)	(A)	(NA)	(VOD)	(VOD)	(VOD)	
Sales UK (...)	(A)	(NA)	(VOD)	(VOD)	(VOD)	
Sales USA (...)	(A)	(NA)	(VOD)	(VOD)	(VOD)	

Rights double inheritance: Folder and Group

- Explicit rights override inherited rights:

	Administrators	Everyone	Worldwide sales	Sales Europe	English sales	US sales	
Root Folder	A	NA	(NA)	(NA)	(NA)	(NA)	
Sales (...)	(A)	(NA)	VOD	(VOD)	(VOD)	(VOD)	
Sales Europe (...)	(A)	(NA)	(VOD)	View Refresh	(A)	(VOD)	
Sales France (...)	(A)	(NA)	(VOD)	(A)	(A)	(VOD)	
Sales UK (...)	(A)	(NA)	(VOD)	(A)	(A)	(VOD)	
Sales USA (...)	(A)	(NA)	(VOD)	(VOD)	(VOD)	(VOD)	

- 3 possible explicit values on security commands:
 - **Explicitly granted (OK)**: User or group is given the right.
 - **Explicitly denied (KO)**: User or group is denied the right.
 - **Not specified (NS)**: No right assignment.

- **Effective rights** (user real rights) = explicit rights aggregation.

	NS	OK	KO	OK + NS	KO + NS	OK + KO
Xir2 Objects	KO	OK	KO	OK	KO	KO

Note: "NS" means "Not Specified"

- « **NS** » can be largely used because it does not have any effect on effective rights calculation. Used with « **OK** » or « **KO** », it is transparent.

- 1 BOE Xir2 security concepts
- 2 Tips and tricks
- 3 BOE Xi 3.0 security: What's new?
- 4 Xi standard administration
- 5 360view: Xi security administration becomes so easy

- ✓ Apply **rights** at **group and folder level**.
- ✓ **Folders** structure: **Content driven**.
- ✓ **Groups** structure: Users with **similar access rights**.
- ✓ Implement a **group tree** instead of an acyclic graph.
- ✓ Use **predefined access levels** instead of customized access rights.
- ✓ Use **Not Specified** right instead of Denied whenever possible.

- ✓ Implement a **closed system of increasing rights** to navigate through folders and not through categories.
- ✓ Don't forget to give rights on the four folder trees.
- ✓ **Be proactive** on security applied on connections.
- ✓ Do not manage universe **overloads** in Designer but **directly in the DB**.
- ✓ Take advantage of the **Everyone group**.
- ✓ Create **Recycle Bin** folders and groups.

- 1 BOE Xir2 security concepts
- 2 Tips and tricks
- 3 BOE Xi 3.0 security: What's new?
- 4 Xi standard administration
- 5 360view: Xi security administration becomes so easy

- ✓ New CMC interface: training session needed.
- ✓ Access level are objects like others (custom profiles, security on them).
- ✓ Rights divided in collection. Content rights can overloaded general rights.
- ✓ You can apply granularity on: Create / modify a report based on a universe. Add / Delete objects.
- ✓ You can specify whether or not a right is applied at folder level/objects level or both.
- ✓ First door is no longer transparent.
- ✓ You can apply multiple rights at one intersection.

- 1 BOE Xir2 security concepts
- 2 Tips and tricks
- 3 BOE Xi 3.0 security: What's new?
- 4 Xi standard administration
- 5 360view: Xi security administration becomes so easy

- CMC usage can be **time consuming**.
- Managing Security is not easy in Xi R2.
- The CMC offers **less flexibility** and especially **visibility** on your security configuration.
- The Security Viewer provides only a partial “User centric” vision. No implementation.
- CMS can easily become a **black box** for Administrators and End-Users.
- Essential manual Security Matrices documentation.

- 1 BOE Xir2 security concepts
- 2 Tips and tricks
- 3 BOE Xi 3.0 security: What's new?
- 4 Xi standard administration
- 5 360view: Xi security administration becomes so easy

360view Release 2 solution key features:

- **User-friendly web-based interface** to manage, implement and document Xi security.
- Manage your security with complete control:
 - Setup security using **dynamic web matrices**.
 - Manage and use your **custom security profiles**.
 - Manage contents and actors using a **hierarchical perspective**.
 - Delegate Xi administration to local administrators.
- **Document** your deployed security:
 - Automatic generation of rights matrices and actor/content trees in Excel.
 - Visualise and document universe overloads (SQL restrictions, connections overloads).
- **Audit** your deployed security.

360View Release 2 benefits for Xi r2 security administration:

- ✓ **Save time and money**
 - Save more than 70% of your administration time!
 - Use the most useful features of the old Supervisor 360 view brought back.

- ✓ **Be SOX compliant**
 - Document every single element of your repository.
 - Be sure to put the right reports and data in the right hands.

- ✓ **Control all your security**
 - Have a 360-degree accurate view of deployed security.
 - See the 'Big Picture' for your security configuration.

Dynamic Security setup (Folders, Universe Folders, Applications, Groups ...) within web Matrices

Use your own Predefined Profiles

	Administrators	Everyone	Sales	Sales Japan	Sales Managers
User Folders (...)	FC	(NA)	(NA)	(NA)	(NA)
Inboxes (...)	FC	(NA)	(NA)	(NA)	(NA)
Root Folder	FC	V	(NA)	(NA)	(NA)
Sales (...)	(FC)	NA	VIEW-REFRESH	(A)	(A)
Regional Sales - JP (...)	(FC)	(NA)	NA	V	(NA)
Regional Sales - US (...)	(FC)	(NA)	NA	(NA)	V



Export to Excel those Rights Matrices (Folders, Universe Folders, Applications, Groups ...)

Accurate overview of all SQL restrictions, connection overloads ...

goodunv (Path: > Universes > Sales)

- no user no group
 - + User Groups
 - + Users
 - Definition
 - Connection
 - gtgt
 - + Controls
 - SQL
 - Query
 - Allow use of subqueries: Yes
 - Allow use of union, intersect and minus operators: No
 - Allow complex operands in Query Panel: Yes
 - Multiple paths
 - Multiple SQL statements for each context: Yes
 - Multiple SQL statements for each measure: Yes
 - Allow selection of multiple contexts: No
 - Cartesian products
 - Warn
 - + Objets
 - Rows
 - Restricted tables :de, Where clause: de='NY'
 - + Table Mapping
 - Row restriction combination: Combine row restrictions using AND



→ Export to Excel those Universe Overloads

Implement and Manage your Actors (Users and Groups) or Contents (Universes and Objects) within a hierarchical perspective

● Groups and Users Management



Export to Excel those Actor or Content trees



Try our trial version or get more info:

<http://www.gbandsmith.com>

Sebastien Goiffon

+ 33 660 822 440

contact@gbandsmith.com