



New BOE Xi 3.0 security concepts

Thank you to the Denver BusinessObjects User Group Committee for giving us this opportunity to share our knowledge and success stories.



- 1 BO5 or BO6 security concepts
- 2 BOE Xi R2 security concepts
- 3 BOE Xi 3.0 security: What's new?
- 4 Migration and Implementation: Challenges
- 5 360view: Xi security administration becomes so easy

- **Security definition:** User rights and restrictions = links between actors (user or group) and universes - universe overloads, documents, applications - security commands, domains and stored procedures.
- **Supervisor:** « **User centric** » security vision.
- « **User centric** » security **implementation**.
- **Group inheritance:** Nearest value selected.
- Only **3 ways** to implement security. Easy to administrate.
- A user can belong to more than one group: **User instances**.
- **Effective right** calculation depending on object.

- 1 BO5 or BO6 security concepts
- 2 BOE Xi R2 security concepts
- 3 BOE Xi 3.0 security: What's new?
- 4 Migration and Implementation: Challenges
- 5 360view: Xi security administration becomes so easy

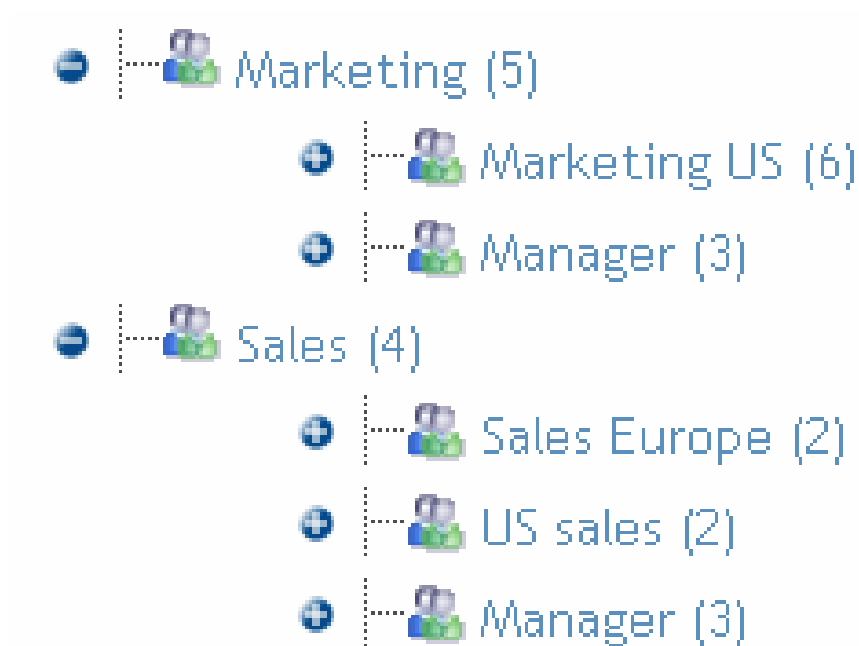
- Under BOE Xir2, universes and documents are stored within **folders**.
- Objects can be stored in one folder only. There are four folder trees.



← Unlimited folder tree (documents & universes)

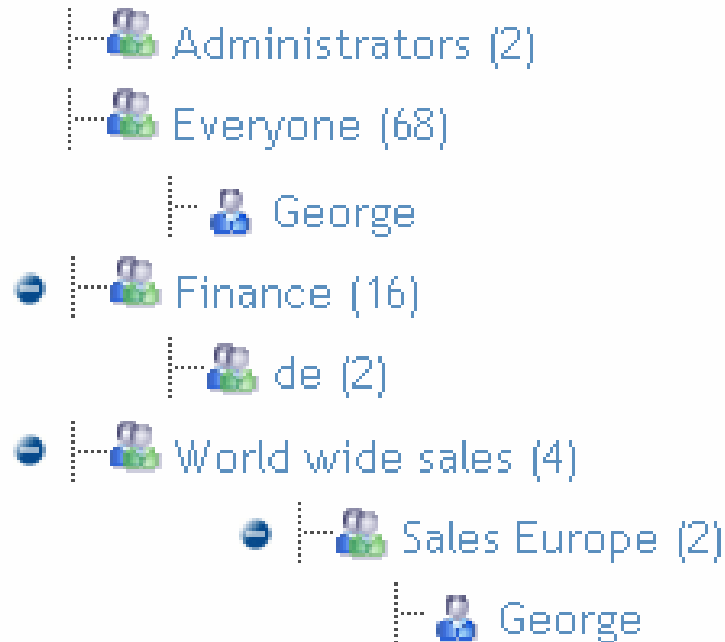
- Think like Windows. It's a set of doors.

- Group structure is no longer a classic tree like under legacy BO. A group can belong to more than one group. A kind of **acyclic graph**:



- Create two group trees: functional groups and technical groups.

- A user can belong to more than one group (the Everyone group, a technical group and a functional one).



Explicit right

Closed system

Inherited right

| | Administrators | Everyone | Worldwide sales | Sales Europe | US sales | |
|--------------------|----------------|----------|-----------------|--------------|----------|--|
| Root Folder | A | NA | (NA) | (NA) | (NA) | |
| Sales (...) | (A) | (NA) | (VOD) | (VOD) | (VOD) | |
| Sales Europe (...) | (A) | (NA) | (VOD) | (VOD) | (VOD) | |
| Sales France (...) | (A) | (NA) | (VOD) | (VOD) | (VOD) | |
| Sales UK (...) | (A) | (NA) | (VOD) | (VOD) | (VOD) | |
| Sales USA (...) | (A) | (NA) | (VOD) | (VOD) | (VOD) | |

Rights double inheritance: Folder and Group

- Explicit rights override inherited rights:

| | Administrators | Everyone | Worldwide sales | Sales Europe | English sales | US sales | |
|--------------------|----------------|----------|-----------------|--------------|---------------|----------|--|
| Root Folder | A | NA | (NA) | (NA) | (NA) | (NA) | |
| Sales (...) | (A) | (NA) | VDD | (VDD) | (VDD) | (VDD) | |
| Sales Europe (...) | (A) | (NA) | (VDD) | View Refresh | (A) | (VDD) | |
| Sales France (...) | (A) | (NA) | (VDD) | (A) | (A) | (VDD) | |
| Sales UK (...) | (A) | (NA) | (VDD) | (A) | (A) | (VDD) | |
| Sales USA (...) | (A) | (NA) | (VDD) | (VDD) | (VDD) | (VDD) | |

- 3 possible explicit values on security commands:
 - Explicitly granted (OK)**: User or group is given the right.
 - Explicitly denied (KO)**: User or group is denied the right.
 - Not specified (NS)**: No right assignment.
- Effective rights** (user real rights) = explicit rights aggregation.

| | NS | OK | KO | OK + NS | KO + NS | OK + KO |
|--------------|----|----|----|---------|---------|---------|
| Xir2 Objects | KO | OK | KO | OK | KO | KO |

Note: "NS" means "Not Specified"

- « **NS** » can be largely used because it does not have any effect on effective rights calculation. Used with « **OK** » or « **KO** », it is transparent.

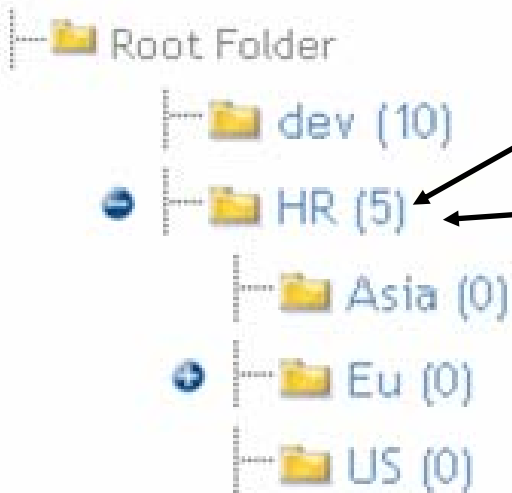
- 1 BO5 or BO6 security concepts
- 2 BOE Xi R2 security concepts
- 3 BOE Xi 3.0 security: What's new?
- 4 Migration and Implementation: Challenges
- 5 360view: Xi security administration becomes so easy

- New CMC interface: Training session needed.

- No modification on contents / actors:
 - Folders organization remains the same: 4 folder trees.
 - No change on groups structure.
 - Still 2 category trees.
 - Servers and connections unchanged.

- New kind of objects: Access level are objects like others.
 - Predefined Access Level (NA, VOD, FC ...).
 - Custom profiles. Set of security commands.
 - Security on them within a matrix.
 - Advanced rights still exist.

- Rights are now divided in collection: General, Content, Application and System.
- Rights have been duplicated on content: hundreds of rights.
- Content rights overload general rights.



General right set: Schedule Objects prohibited.

Content right overloads General settings:
Schedule Deski Documents allowed.

Net result:

**Schedule documents not allowed except
Deski documents.**

- Content rights possible on Folders.
- Descending right: Add object.
- Ascending right: Delete object.



General right set: Add Objects allowed.




Content right overloads General settings: Add Subfolder not allowed.

Net result:

Add Subfolder not allowed.

Add Documents allowed.

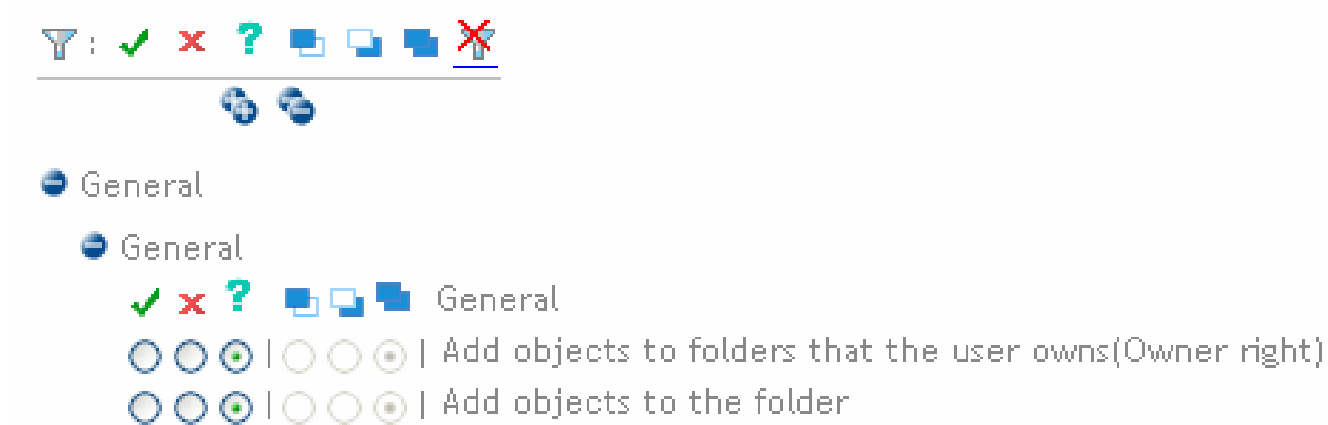
- Granularity possible on accessible Universes.
- List of universes to refresh documents:

| | |
|---|-----------|
|  | Finance |
|  | HR |
|  | Marketing |
|  | Sales |

- List of universes to create / modify queries:

| | |
|---|-----------|
|  | Finance |
|  | Marketing |
|  | Sales |

- You can specify whether or not a right is applied at:
 - Object level (only at door level)
 - Sub Object level
 - Or both.



■ Impact on rights inheritance:

| | Administrators | Everyone | Worldwide sales | Sales Europe | English sales | US sales |
|--------------------|----------------|----------|-----------------|--------------|---------------|----------|
| Root Folder | FC | A | | | | |
| Sales (...) | {FC} | NA | VDD | {VDD} | {VDD} | {VDD} |
| Sales Europe (...) | {FC} | NA | {VDD} | A | {A} | {VDD} |
| Sales France (...) | {FC} | NA | {VDD} | {VDD} | {VDD} | {VDD} |
| Sales UK (...) | {FC} | NA | {VDD} | {VDD} | {VDD} | {VDD} |
| Sales USA (...) | {FC} | NA | {VDD} | {VDD} | {VDD} | {VDD} |

Right only applied for one door and not to sub doors!

- It's possible to override explicitly denied rights.
- It's possible to explicitly deny a right at a top level and then explicitly granted the same right at a lower level (without braking inheritance like in Xi r2):

| | Administrators | Everyone | Sales | Sales Europe | Sales Benelux | Sales Dn | Sales UK | WW sales | |
|-----------------------|----------------|----------|-------------------|--------------------|--------------------|--------------------|--------------------|--------------------|-------------------|
| Root Folder | A | A | | | | | | | |
| Sales (...) | (FC) | NA | Schedule denied | (Schedule denied) | (Schedule denied) | (Schedule denied) | (Schedule denied) | (Schedule denied) | |
| Sales APJ (...) | (FC) | NA | (Schedule denied) | Schedule granted | (Schedule granted) | (Schedule granted) | (Schedule granted) | (Schedule granted) | (Schedule denied) |
| Sales Australia (...) | (FC) | NA | (Schedule denied) | (Schedule granted) | (Schedule granted) | (Schedule granted) | (Schedule granted) | (Schedule granted) | (Schedule denied) |
| Sales Japan (...) | (FC) | NA | (Schedule denied) | (Schedule granted) | (Schedule granted) | (Schedule granted) | (Schedule granted) | (Schedule granted) | (Schedule denied) |
| Sales NA (...) | (FC) | NA | (Schedule denied) | (Schedule denied) | (Schedule denied) | (Schedule denied) | (Schedule denied) | (Schedule denied) | (Schedule denied) |

- First door is no longer transparent.
 - You can no longer applied NA access level to all top level doors.

- You can apply multiple rights at one intersection.

| | Administrators | Everyone | Worldwide sales | Sales Europe | English sales | US sales | |
|--------------------|----------------|----------|----------------------|----------------------|----------------------|----------------------|--|
| Root Folder | A | NA | NA | NA | NA | NA | |
| Sales (...) | (FC) | NA | V | (V) | (V) | (V) | |
| Sales Europe (...) | (FC) | NA | My profile - VOD | (My profile) - (VOD) | (My profile) - (VOD) | (My profile) - (VOD) | |
| Sales France (...) | (FC) | NA | (My profile) - (VOD) | (My profile) - (VOD) | (My profile) - (VOD) | (My profile) - (VOD) | |
| Sales UK (...) | (FC) | NA | (My profile) - (VOD) | (My profile) - (VOD) | (My profile) - (VOD) | (My profile) - (VOD) | |
| Sales USA (...) | (FC) | NA | (V) | (V) | (V) | (V) | |

- **Effective rights** (user real rights) = explicit rights aggregation.

| | NS | OK | KO | OK + NS | KO + NS | OK + KO |
|--------------|----|----|----|---------|---------|---------|
| Xir2 Objects | KO | OK | KO | OK | KO | KO |

Note: "NS" means "Not Specified"

- Rights inherited from groups. Could be multiple rights.
- Effective rights calculation now also depends on:
 - Rights set on Content.
 - Type of folder inheritance.

- You can apply right at content level. Content rights override general rights.
- You can override an explicitly denied right at a lower level.
- You can apply a right at folder level and at sub folders level.
- You can apply multiple rights between a folder and a group.
- You can apply granularity on the list of universes you want to use for report creation or modification.

- 1 BO5 or BO6 security concepts
- 2 BOE Xi R2 security concepts
- 3 BOE Xi 3.0 security: What's new?
- 4 Migration and Implementation: Challenges
- 5 360view: Xi security administration becomes so easy

- BOE Xi 3.0 security model is powerful.
- Understand the new security concepts.
Take advantage of them.
Redesign your security model.
- Challenges of security migration or implementation:

Challenge 1:

Manage the repository post migration or post implementation, whilst limiting administration tasks and by offering an optimum quality of service to end-users.

Challenge 2:

Implement and **Document** your Xi security.

- 1 BO5 or BO6 security concepts
- 2 BOE Xi R2 security concepts
- 3 BOE Xi 3.0 security: What's new?
- 4 Migration and Implementation: Challenges
- 5 360view: Xi security administration becomes so easy

360view solution key features:

- **User-friendly web-based interface** to manage, implement and document Xi security.
- Manage your security Xir2 and Xi 3.0 with complete control:
 - Setup security using **dynamic web matrices**.
 - Manage and use your **custom security profiles**.
 - Manage contents and actors using a **hierarchical perspective**.
 - Delegate Xi administration to local administrators.
- **Document** your deployed security:
 - Automatic generation of rights matrices and actor/content trees in Excel.
 - Visualise and document universe overloads (SQL restrictions, connections overloads).
- **Audit** your deployed security.

360View benefits for Xi security administration:

- ✓ **Save time and money**
 - Save more than 70% of your administration time!
 - Use the most useful features of the old Supervisor 360 view brought back.

- ✓ **Be SOX compliant**
 - Document every single element of your repository.
 - Be sure to put the right reports and data in the right hands.

- ✓ **Control all your security**
 - Have a 360-degree accurate view of deployed security.
 - See the 'Big Picture' for your security configuration.

Save daily
administration time

Security
implementation made
easy

Document all



Keep control over your
repository

Earn efficiency

Success your migration
project

Dynamic Security setup (Folders, Universe Folders, Applications, Groups ...) within web Matrices

Use your own Predefined Profiles

| | Administrators | Everyone | Sales | Sales Japan | Sales Managers | |
|---------------------------|----------------|----------|--------------|-------------|----------------|--|
| User Folders (...) | FC | (NA) | (NA) | (NA) | (NA) | |
| Inboxes (...) | FC | (NA) | (NA) | (NA) | (NA) | |
| Root Folder | FC | V | (NA) | (NA) | (NA) | |
| Sales (...) | (FC) | NA | VIEW-REFRESH | (A) | (A) | |
| Regional Sales - JP (...) | (FC) | (NA) | NA | V | (NA) | |
| Regional Sales - US (...) | (FC) | (NA) | NA | (NA) | V | |



Export to Excel those Rights Matrices (Folders, Universe Folders, Applications, Groups ...)

Accurate overview of all SQL restrictions, connection overloads ...

goodunv (Path: > Universes > Sales)

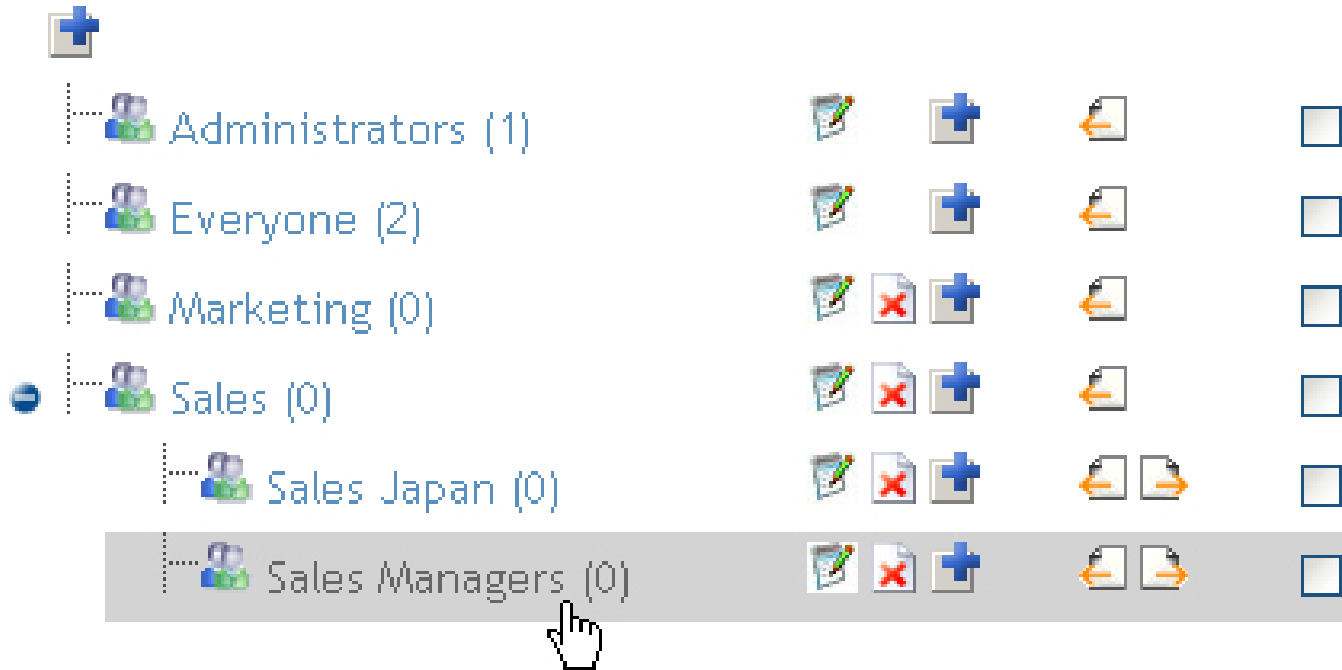
- no user no group
 - + User Groups
 - + Users
 - Definition
 - Connection
 - gtgt
 - + Controls
 - SQL
 - Query
 - Allow use of subqueries: Yes
 - Allow use of union, intersect and minus operators: No
 - Allow complex operands in Query Panel: Yes
 - Multiple paths
 - Multiple SQL statements for each context: Yes
 - Multiple SQL statements for each measure: Yes
 - Allow selection of multiple contexts: No
 - Cartesian products
 - Warn
 - + Objets
 - Rows
 - Restricted tables :de, Where clause: de='NY'
 - + Table Mapping
 - Row restriction combination: Combine row restrictions using AND



Export to Excel those Universe Overloads

Implement and Manage your Actors (Users and Groups) or Contents (Universes and Objects) within a hierarchical perspective

● Groups and Users Management



Export to Excel those Actor or Content trees



Try our trial version or get more info:

<http://www.gbandsmith.com>

Sebastien Goiffon

+ 33 660 822 440

contact@gbandsmith.com